



2-303 Lansdowne Ave
Toronto ON M6K 2W5
416 849 2864
Tuesday-Saturday 12-6
www.xpace.info

CALL FOR PROPOSALS:

**OUR UPCOMING SUBMISSION DEADLINE IS 5 PM ON FRIDAY MAY 24th, 2013.
PLEASE MAKE SURE TO CAREFULLY READ ALL INSTRUCTIONS ABOUT THE
SUBMISSION PROCESS.**

Xpace Cultural Centre accepts proposals of all media from student and emerging artists, curators and/or designers. Our programming committee meets twice yearly to consider submissions.

Xpace does not accept submissions over email. Please mail or drop off submissions to:
2-303 Lansdowne Ave, Toronto, ON M6K 2W5 c/o The Programming Committee.

**THERE IS A PROPOSAL WRITING WORKSHOP ON SATURDAY MAY 11, 2013. PLEASE
FEEL FREE TO BRING IN PROGRESS PROPOSALS FOR FEEDBACK.**

Submissions (for all spaces) must include:

- 1. Proposal Application Form (download here)**
- 2. Project Description (500 words max):** The project description should give a clear and concrete description of the work you are proposing for installation at Xpace. Please specify which exhibition space you intend the work to be exhibited in. All of our spaces consider site specificity, so please take that into account in your description.
- 3. Artist Statement (250 words max):** The artist statement should give a description of your overall practice as it relates to the specific project you are proposing for installation at Xpace.
- 4. Technical Description (250 words max):** The technical description should include a list of all foreseeable technical requirements including equipment and materials necessary for installation within Xpace (this does not include materials to create the work).



**Xpace
Cultural
Centre**

2-303 Lansdowne Ave
Toronto ON M6K 2W5
416 849 2864
Tuesday-Saturday 12-6
www.xpace.info

5. **Curriculum Vitae (Max 3 pages):** Your CV should include education and exhibition history, as well as any relevant experience, reviews, etc. **Xpace only shows the work of student and emerging artists/curators/designers – Please make sure that you fall within our mandate before submitting.**
6. **Visual Support Material with accompanying Support Material List (5-10):** Please maintain consistent labeling of your image files (Ex. JSmith_FlowerPainting.jpg). We do not accept Power Point files for image submissions. Video and audio files should be a maximum of 3-5 minutes in total. Please make sure that all files are Mac compatible.

Make sure that everything you submit is clearly labeled with your name and contact information.

EXTERNAL SPACE

Our External Space is located on OCAD University Campus in the Learning Zone. The External Space offers opportunities for media based works, with an emphasis on video, animation, or sound pieces. Screened on a video monitor in the Learning Zone, exhibitions typically last 6 weeks.

To Submit to the External Space please follow our regular submission process, as outlined above.

WINDOW SPACE

The Window Space looks out onto Lansdowne Avenue and is visible 24 hours a day. Works proposed for the Window Space should consider the nature of an exhibition space with 24-hour access, and its location and presence as a window facing out onto the street. Solo or collaborative works may apply. Exhibitions typically last 4 weeks.



2-303 Lansdowne Ave
Toronto ON M6K 2W5
416 849 2864
Tuesday-Saturday 12-6
www.xpace.info

MAIN SPACE

The Main Space gallery hosts group exhibitions organized around a connecting theme or idea. Proposals should emphasize the ways in which the works and artists included present and reinforce the framework proposed by that idea. Proposals that consider the specificity of Xpace's Main Space will be given priority. Exhibitions typically last 3 weeks.

PROJECT SPACE

The Project Space is intended for installation based practices and works in progress. Submissions that emphasize experimentation and take into account site-specificity will be given priority. Solo or collaborative works may apply. Exhibitions typically last 3 weeks.

Please take a look at our programming archives to get a sense of the types of exhibitions that Xpace has programmed in the past.

If you have any questions about the proposal process please contact either Cameron Lee at Cameron@xpace.info or Alicia Nauta at Alicia@xpace.info.

DUE TO HIGH INTEREST, XPACE WILL ONLY ACCEPT SUBMISSIONS RECEIVED THROUGH OUR FORMAL SUBMISSION PROCESS AS OUTLINED BELOW. THE PROGRAMMERS ARE HAPPY TO ANSWER YOUR QUESTIONS BUT CANNOT ACCEPT INFORMAL SUBMISSIONS.



**Xpace
Cultural
Centre**

2-303 Lansdowne Ave
Toronto ON M6K 2W5
416 849 2864
Tuesday-Saturday 12-6
www.xpace.info

PROPOSAL APPLICATION FORM

CONTACT INFORMATION:

NAME: _____

ADDRESS: _____

CITY: _____ **POSTAL CODE:** _____

PHONE: _____ **EMAIL:** _____

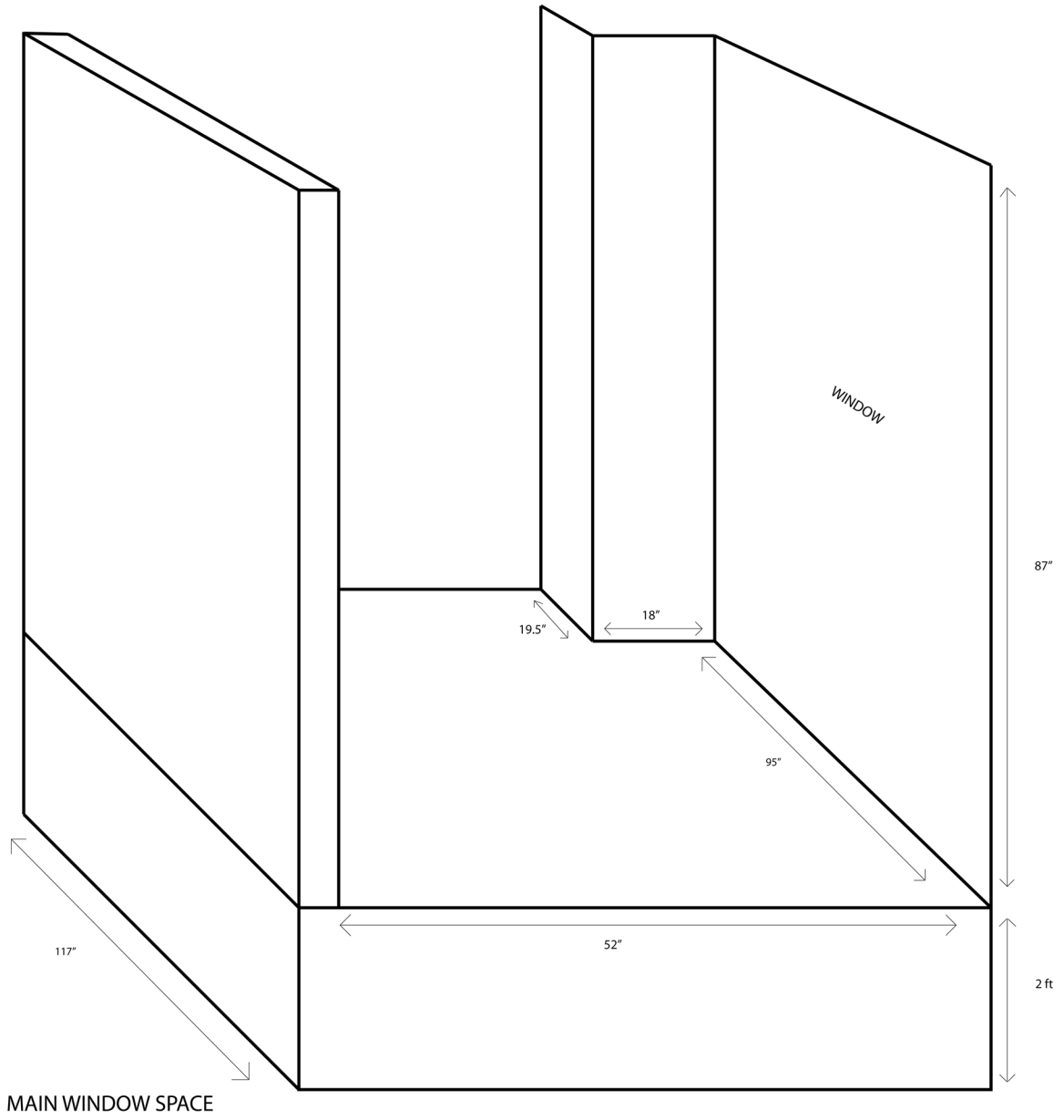
NAME OF ORGANIZATION OR COLLECTIVE (where applicable):

PROJECT TITLE: _____

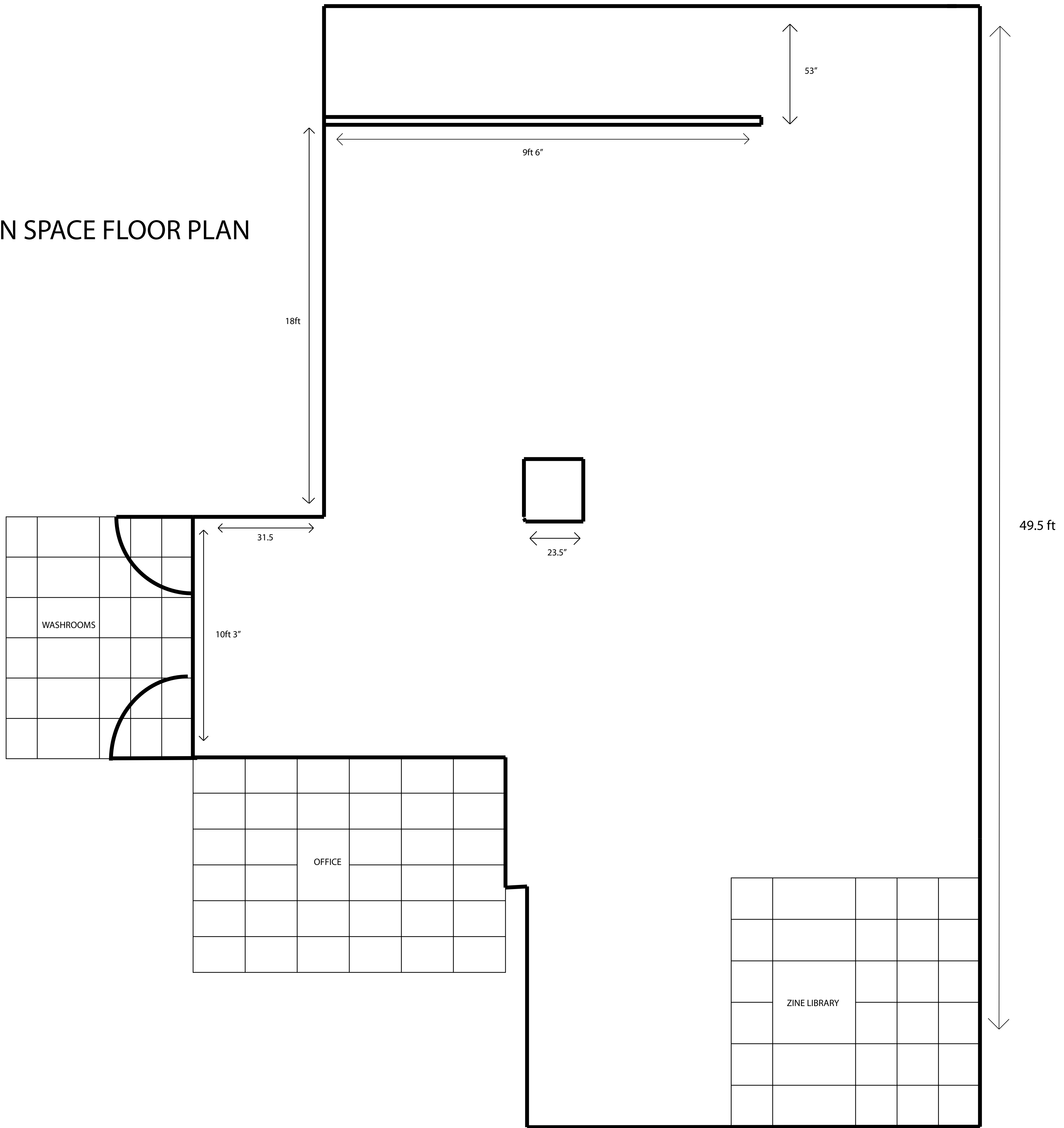
PROJECT SUMMARY (max. 50 words – do not direct us elsewhere in the application):

PLEASE INDICATE PREFERENCE FOR:

- MAIN SPACE:** for group exhibitions and events only
- WINDOW SPACE:** solo or collaborative works may apply
- PROJECT SPACE:** solo or collaborative works may apply
- EXTERNAL SPACE:** solo or collaborative works may apply



MAIN SPACE FLOOR PLAN



XPACE PROJECT SPACE

